



# Learning Resource Pack

**A comprehensive guide to visiting the Attraction**  
**Early Years and the Foundation Stage**





## **CONTENTS**

### **Attraction Information**

**The World of Beatrix Potter**  
**The history of Beatrix Potter**  
**Map of the Attraction**

### **Learning Links**

**Literacy**  
**History**  
**Science**  
**Art**



### **Your Visit**

**Planning your Visit**  
**Booking your visit**  
**Activities**

**Additional Information**





## **The World of Beatrix Potter Attraction**

This unique visitor attraction provides a fun and stimulating experience that takes you on an imaginative and captivating journey through the works of Beatrix Potter.

Throughout the attraction 23 of Beatrix Potter's tales are brought to life in an engaging and magical way. All the stories are depicted with tactile 3D models which replicate the illustrations in Beatrix Potter's Books.

Within the attraction, we have our Interactive Virtual Walk area which provides information about Beatrix Potter, her life and her links with the local area. There is also our Peter Rabbit Garden which begins to tell the story of Beatrix Potter as a naturalist and children will enjoy exploring this vibrant and enchanting area. There are animal homes to hunt out and lots to discover especially in Mr McGregor's garden where you will find a whole host of vegetables growing.

Our gardener can be available to give your group a tour of the garden, picking out interesting species and explaining how we grow the various plants, fruit, vegetables and herbs. We may also be able to offer gardening workshops and visits to our Polytunnel where we grow fresh fruit and vegetables for The New Laundry Cafe.



## Attraction Activities

### **Visit by Peter Rabbit**

Visitors to the World of Beatrix Potter Attraction are always charmed by a visit from Peter Rabbit. He can welcome your pupils to the attraction and is always a popular photo opportunity.

### **Visit by Beatrix Potter**

Our knowledgeable actress talks to pupils as Beatrix Potter in the year 1920. Dressed in a costume recreated from original photographs by costumiers, she can tailor her performance to suit your occasion. Children may like to come up with their own questions to interview Beatrix or alternatively she could read one of her famous tales.

### **Garden Talk**

Our gardener can be on hand to give your group a tour of the Peter Rabbit Garden. They can tell you about all the different plants we grow, why they were chosen and how we look after them. Our gardeners are not based at the attraction every day so please discuss your interest in this option when making your booking so we can schedule it accordingly.

**These additional activities will incur an additional charge and we will be happy to discuss these with you when you make your booking.**



## The history of Beatrix Potter



Helen Beatrix Potter, known as Beatrix, was born on 28 July 1866 to Rupert and Helen Potter in Kensington, London. Her younger brother Walter Bertram followed six years later. Beatrix and Bertram loved to draw and paint, and often made sketches of their many pets, including rabbits, mice, frogs, lizards, snakes and a bat.

The most exciting time of the year for Beatrix was the summer when the family travelled north to spend three months in the countryside. When Beatrix was sixteen, the family stayed at Wray Castle, where Beatrix began a lifelong love of the Lake District.

Beatrix's love of the countryside began to inspire her tales. The Tale of Peter Rabbit came from a picture letter originally sent to her governess's son Noel Moore. After being rejected by several publishers, Beatrix decided to publish the tale herself. The book's instant success encouraged Frederick Warne & Co., who had previously turned it down, to reconsider their decision, offering to take it on as long as Beatrix re-illustrated it in colour. On publication in October 1902, it was an immediate bestseller.

Income from her books enabled her to invest in farmland, including Hill Top Farm, which would become a feature in many of her tales. Beatrix was a staunch supporter of the National Trust, she followed its principles in preserving her land. She also bred Herdwick sheep on her farms in the Lake District and played an integral part in bringing them back from the brink of extinction.

Beatrix died in 1943, leaving fifteen farms and over four thousand acres of land to the National Trust. Today, more than two million Beatrix Potter books are sold across the world every year – four books every minute! The charming stories have a timeless quality, passed down from generation to generation and discovered anew by many more readers each year.





## Learning Links

### **The Prime Areas**

#### **Communication and language**

**Listening and attention:** children listen attentively in a range of situations. They listen to stories, accurately anticipating key events and respond to what they hear with relevant comments, questions or actions.

**Understanding:** They answer 'how' and 'why' questions about their experiences and in response to stories or events.

**Speaking:** children express themselves effectively, showing awareness of listeners' needs. They use past, present and future forms accurately when talking about events that have happened or are to happen in the future. They develop their own narratives and explanations by connecting ideas or events.

#### **Physical development**

Health and self-care: children know the importance for good health of physical exercise, and a healthy diet, and talk about ways to keep healthy and safe.

Personal, social and emotional development

**Self-confidence and self-awareness:** children are confident to speak in a familiar group, will talk about their ideas, and will choose the resources they need for their chosen activities. They say when they do or don't need help.

**Making relationships:** children play co-operatively, taking turns with others.

### **The Specific Areas**

#### **Literacy**

**Reading:** children read and understand simple sentences. They use phonic knowledge to decode regular words and read them aloud accurately. They also read some common irregular words.

**Writing:** children use their phonic knowledge to write words in ways which match their spoken sounds. They also write some irregular common words. They write simple sentences which can be read by themselves and others.

Understanding the world

**The world:** children know about similarities and differences in relation to places, objects, materials and living things. They make observations of animals and plants and explain why some things occur, and talk about changes.

Expressive arts and design

**Exploring and using media and materials:** They safely use and explore a variety of materials, tools and techniques, experimenting with colour, design, texture, form and function.

**Being imaginative:** children use what they have learnt about media and materials in original ways, thinking about uses and purposes. They represent their own ideas, thoughts and feelings through design and technology, art, music, dance, role-play and stories.

## Planning your Visit

**A visit to the attraction usually takes 60-90 minutes. This allows you time to look around the exhibits and also to appreciate the Peter Rabbit Garden. If you plan to do further activities during your visit, please plan time for these accordingly.**

### **Opening Times**

1st April – 31st October  
10am – 5.30pm

1st November – 31st March  
10am - 4.30pm

**CLOSED** 25th December

### **Admission**

Admission can be paid on the day of the visit or the school can be invoiced. Group rates apply to groups of 15 people or more.

### **Travelling to the Attraction**

The World of Beatrix Potter is located on Crag Brow, Bowness-on-Windermere and can be easily accessed from the A591 via Rayrigg Road or New road, Windermere or from the A592.

### **Drop off and Parking**

Coaches are asked to drop groups at Rayrigg Road either opposite the pay and display car park or using the bus lay-by opposite the attraction. There is a coach park located on Glebe Road which is free if your group is planning a boat trip. This will need to be booked in advance.

### **Admission Prices**

Please check the website for current prices.

We will admit one adult free for every ten paying children

### **Access**

The main entrance is located off Crag Brow, just around the corner from where the coach will drop you off. Our attraction is accessible for all, with ramps and lifts available for those using wheelchairs.

### **Arrival**

On your arrival, make your way to the Box Office.

### **Toilets**

Toilets are available at the bottom of the stairs on the right. We have Wheelchair accessible toilet facilities.

### **Cloakroom**

Unfortunately, we cannot provide a space for children to store their bags and coats please bear this in mind when visiting.

### **First Aid**

The attraction has a number of trained first aiders. If a first aider is required, please seek assistance from an member of staff.



# Planning your visit



## **Risk Assessments**

Although we understand that schools are often responsible for providing their own risk assessments when planning educational visits, we can provide you with a copy of our own comprehensive risk assessment which we can email you on request.

In our experience, the attraction can be best utilised if you split your group into smaller groups of about 8—10 children. You may wish to show the children the entire attraction first and then revisit parts again in smaller groups. This gives the children the opportunity to appreciate the attraction fully and to carry out additional activities without becoming crowded.



## Story Sequencing: The Fierce Bad Rabbit Activity

THIS IS A FIERCE BAD RABBIT; look at his savage whiskers, and his claws and his turned up tail.

.....  
This is a nice gentle Rabbit. His mother has given him a carrot.

.....  
The bad Rabbit would like some carrot.

.....  
He doesn't say "Please." He takes it!

.....  
And he scratches the good Rabbit very badly.

.....  
The good Rabbit creeps away and hides in a hole.  
It feels sad.

.....  
This is a man with a gun.  
He sees something sitting on a bench. He thinks it is a very funny bird!  
He comes creeping up behind the trees.  
And then he shoots - BANG!

.....  
This is what happens -  
But this is all he finds on the bench, when he rushes up with his gun.

.....  
The good Rabbit peeps out of its hole.

.....  
And it sees the bad Rabbit tearing past- without any tail or whiskers!

The End

## Design an ideal home

Choose a character from a Beatrix Potter Story and draw them below. Try and find out what they like and dislike.

**Character**

**What do they like to eat?  
Where do they live?**

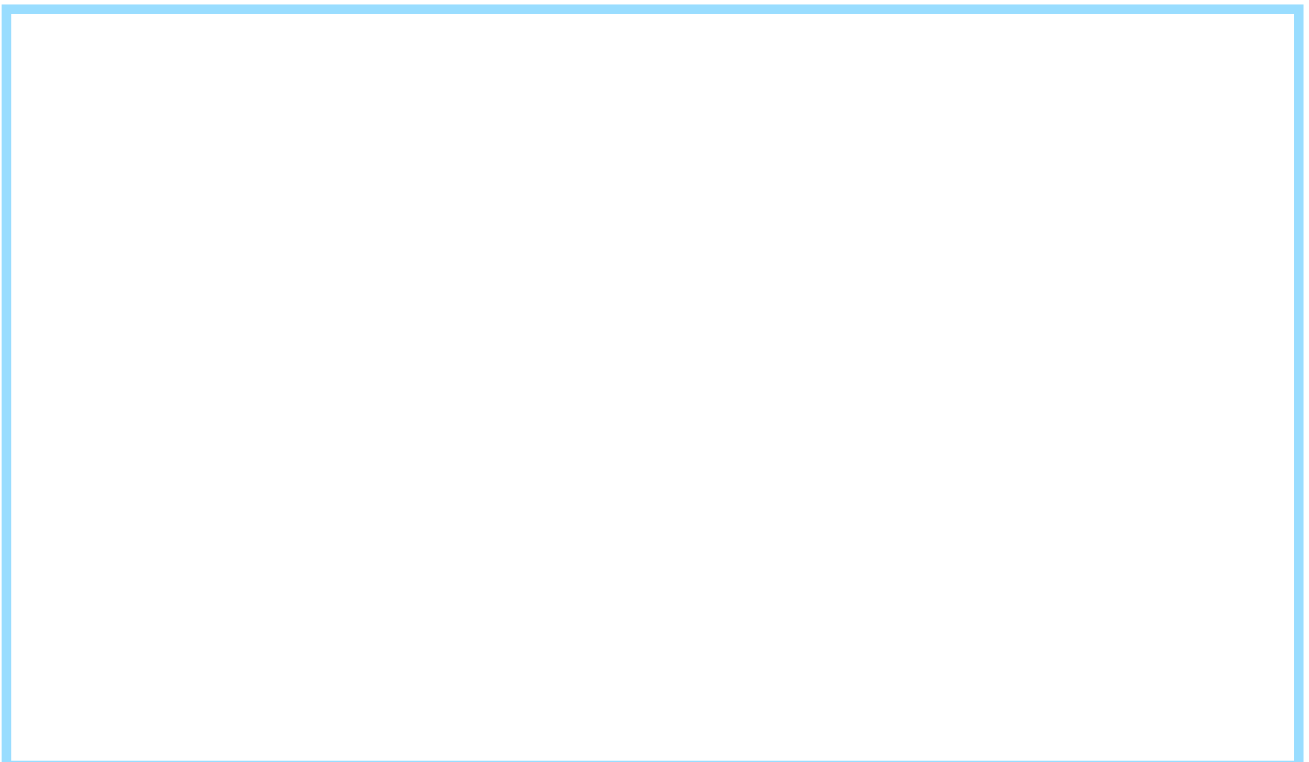
**Underground**

**In water**

**Field**

**Woodland**

Now you know a bit about this animal character, can you design its ideal home?



## Design an ideal home

This is Mrs Tiggy-Winkle. She is a hedgehog.  
Can you find out more about her?



### What do hedghogs eat?



### Where might you see them?

Underground

In water

Field

Woodland

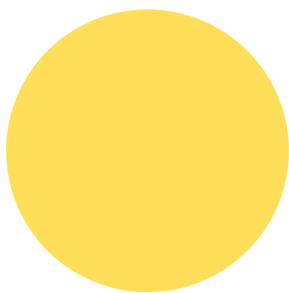
**FACT:** Hedgehogs have lots of spikey prickles and roll themselves into a ball when they feel threatened.

## Can you design Mrs Tiggy Winkle's ideal home?

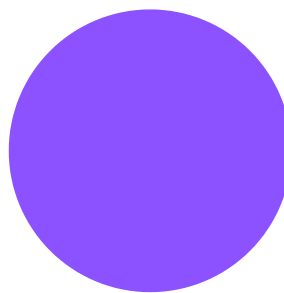
A large, empty rectangular box with a light blue border, intended for a child to draw or write their design for Mrs Tiggy-Winkle's ideal home.

# Garden Bingo

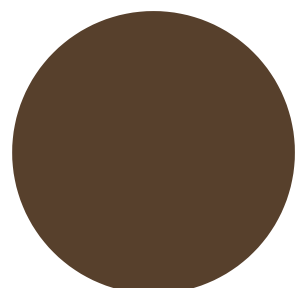
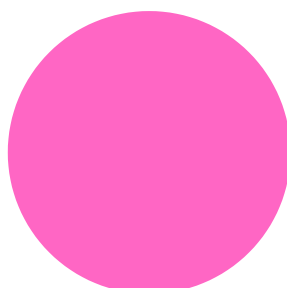
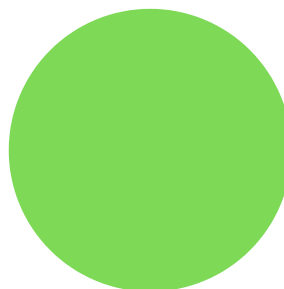
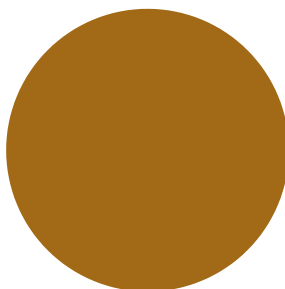
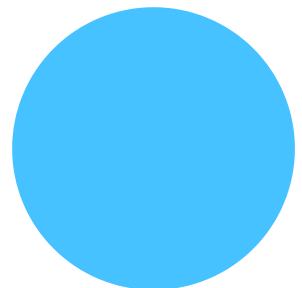
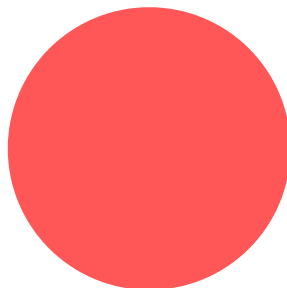
Working in pairs or small groups, the children take it in turns to find something in the garden that matches a colour or texture on the bingo card. Put their name in the circle. The first group to get three in a row wins!



**Rough**



**Smooth**



## Beatrix Potter Character Study


Choose two characters from the attraction that interest you. Look carefully at the character and draw them in the space below.

**Character 1**



**Name :**

**Character 2**



**Name:**

**Now create your own character**

**What is their name?**

**What are they wearing?**

**What do they like to eat?**

**My character:**



## Garden Rubbings

You will need some wax crayons, chalk or pastels. The Peter Rabbit Garden is full of different textures. Place your sheet over an interesting texture and rub with a crayon. Look at the effect it creates.

**Rubbing 1**

**Rubbing 2**

**Rubbing 3**

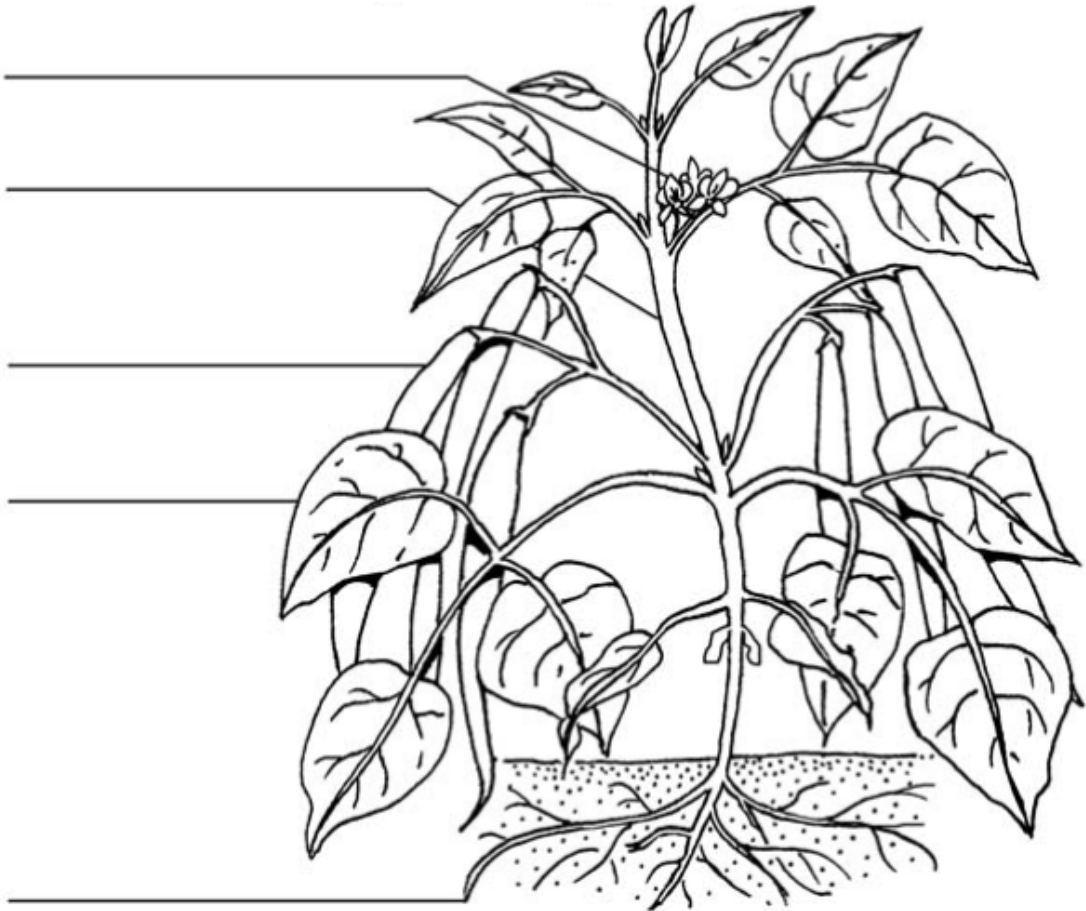
**Rubbing 4**

**Rubbing 5**

**Rubbing 6**

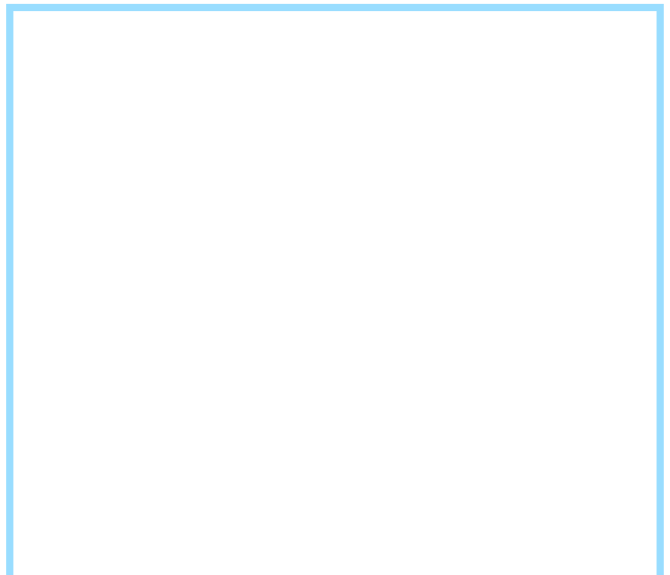
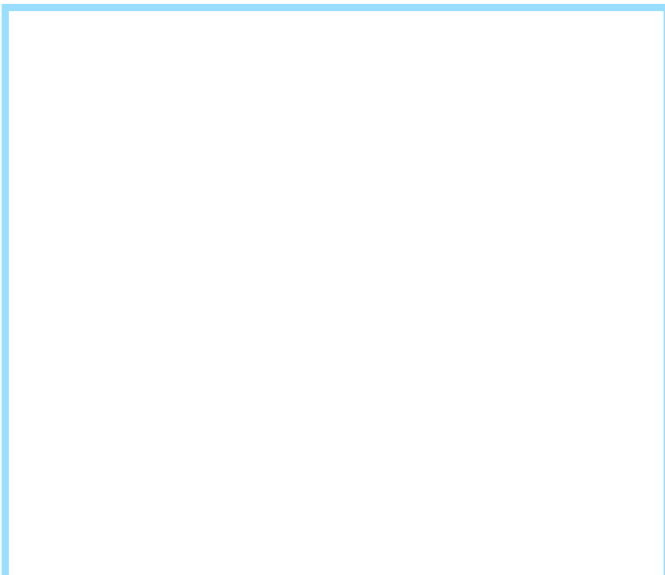
# Parts of a Plant

Label & colour parts of this plant



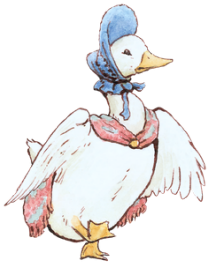
Flower Stem Leaf Fruit Root

Draw some plants from the garden.





# The World of Beatrix Potter Attraction Quiz



1. What is Jemima Puddle-duck sitting on?

2. In the Tale of Mr Tod, who is asleep in his bed?



3. How many piglets are eating out of the trough?

4. What is Old Brown owl holding in his claws?



5. What do you think Mr Jeremy Fisher is Fishing for?

6. What colour is Peter Rabbit's jacket?



## [Additional information](#)

### Lake District Tours

The World of Beatrix Potter Attraction can be enjoyed as part of a range of reduced price Lake District tours with other top attractions. These Lake District tours are designed to make the most of your time in "the most beautiful corner of England".

Your group can sail on England's longest lake, journey by steam train through beautiful Lakeland countryside or even explore beneath the surface of Windermere at the Lakes Aquarium. We recommend these four popular packages but of course we can also arrange your own bespoke tour.

### Rails, Sails and Tails

Take a journey by Steam locomotive on The Lake District's only standard gauge preserved railway line, through the Leven Valley to the bottom of Lake Windermere. From here you hop on to a boat and sail up the Lake to Bowness where it's just a short walk to The World of Beatrix Potter Attraction to complete your Rails, Sails and Tails tour.

Please check our website for current prices.

### Fur, Fin, Fun

Visit Lakeland's leading freshwater aquarium and meet the UK's largest collection of freshwater fish. Watch the otters at play and walk under the lake while the ducks dive above you. Combine your visit with a Lakeland cruise, taking in magnificent scenery, then finish the tour with a visit to The World of Beatrix Potter Attraction.

Please check our website for current prices.

### 3 B's

A very popular tour that combines a visit to The World of Beatrix Potter Attraction with a boat trip and a visit to the Lake District National Park Visitor Centre at Brockhole. This innovative attraction boasts an exciting exhibition about the Lakes and is set in stunning Edwardian grounds on the shores of Lake Windermere. It has an award-winning adventure playground which is ideal for groups that need to let off steam! It also has an excellent place to picnic and play games! The cruise between the attractions means you can leave your transport for a while and enjoy the Lake District countryside.

Please check our website for current prices.

**More Details are available over on our website:**

[www.hop-skip-jump.com](http://www.hop-skip-jump.com)



## **Additional Information**



### **Useful Contacts**

Lakeside & Haverthwaite Railway Co. Ltd  
Haverthwaite Station, Nr Ulverston, Cumbria, LA12 8AL  
Tel: 015395 31594  
Website: [www.lakesiderailway.co.uk](http://www.lakesiderailway.co.uk)

Lakes Aquarium  
Lakeside, Newby Bridge, Cumbria, LA12 8AS  
Tel: 015395 30153  
Email: [info@lakesaquarium.co.uk](mailto:info@lakesaquarium.co.uk)  
Website: [www.lakesaquarium.co.uk](http://www.lakesaquarium.co.uk)

Windermere Lake Cruises Ltd  
Winander House, Glebe Road, Bowness-on-Windermere, Cumbria, LA23 3HE  
Tel: 015394 43360  
Email: [info@windermere-lakecruises.co.uk](mailto:info@windermere-lakecruises.co.uk)  
Website: [www.windermere-lakecruises.co.uk](http://www.windermere-lakecruises.co.uk)

Brockhole - The Lake District Visitor Centre  
Windermere, Cumbria, LA23 1LJ  
Tel: 015394 46601  
Website: [www.brockhole.co.uk](http://www.brockhole.co.uk)

Lakeland Motor Museum Limited  
Old Blue Mill, Backbarrow, Ulverston, Cumbria, LA12 8TA  
Tel: 015395 30400  
Email: [info@lakelandmotormuseum.co.uk](mailto:info@lakelandmotormuseum.co.uk)  
Website: [www.lakelandmotormuseum.co.uk](http://www.lakelandmotormuseum.co.uk)

Cumbria Tourism  
Windermere Road, Staveley, Kendal, Cumbria, LA8 9PL  
Tel: 01539 822222  
Email: [info@cumbriatourism.org](mailto:info@cumbriatourism.org)  
Website: [www.golakes.co.uk](http://www.golakes.co.uk)

